

DJ EQUIPMENT 2012

Rane SL 2 for Serato Scratch Live

The Rane SL series of interfaces with Serato Scratch Live set the standard for vinyl emulation. The SL 2 advances the technology found in the original SL 1 with these improvements:

- CD / Phono input switch on the SL 2 box.
- Superior sounding 24-bit converters.
- Hotter 3 Vrms input and output.
- 44.1 or 48 kHz sample rate selected in software.
- ASIO / Core Audio drivers for 3rd-party support.
- Smaller and more compact die-cast design.

The Rane SL 2 gives you the freedom to take your entire digital music collection on the road with advanced features that add extra creativity to your DJing. This intuitive system replicates the traditional DJing experience for "real feel" usability. Low latency means the response time from touching the decks to hearing an audio signal is extremely fast. Serato engineers developed system level audio drivers that allow accurate and reliable operation at faster speeds than any other similar package.



The Rane SL 2 interface connects one or two standard vinyl or CD turntables to your computer using a single USB cable and audio connections to line inputs on your DJ mixer. This system includes two 12" Control Vinyl records and two Control CDs, USB cable, and audio cables to your mixer.

The SL 2 interface box is 5.5" x 5" x 1.3" (14.1 x 12.5 x 3.3 cm). See the "Minimum System Requirements for Serato Scratch Live" on page 7.

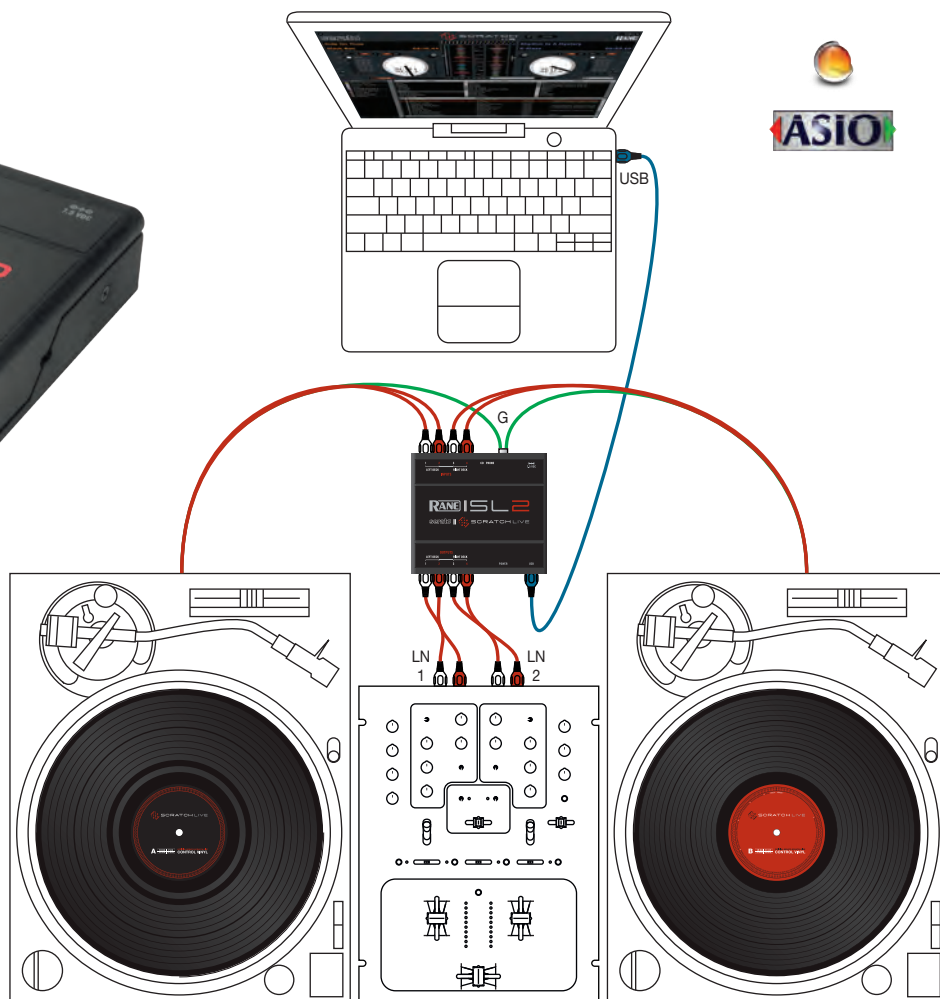
RANE || SL 2

THE NEW STANDARD FOR PROFESSIONAL DJS

serato || **SCRATCH LIVE**

- DJ with music files on your computer using Control Vinyl, Control CD or MIDI.
- Connect two turntables or two CD decks selected via the rear panel switch.
- High-quality 24-bit audio with software-selectable 44.1 or 48 kHz sample rate.
- Galvanic isolation guarantees audio is actively isolated from USB and power.
- Creative DJing features: cueing, looping, keylock, sample player and DJ-FX.
- Intuitive file management with crates. Easy file and iTunes playback migration.
- Multiple modes for waveform display and library browsing.
- Built-in recording interface for archiving vinyl.
- Multiple audio file type support: WAV, AIFF, ALAC*, AAC*, Ogg Vorbis and MP3.

* Requires Apple Quicktime (not included).



Rane SL 3 for Serato Scratch Live

The SL 3 connects one, two or three standard vinyl or CD turntables to your computer and the mixer of your choice. Using regular vinyl turntables, CD players or MIDI controllers, you can scratch and mix files from your Mac or Windows computer's CD or hard drive. This intuitive system replicates the traditional DJing experience for "real feel" usability. With unparalleled performance and stability, you'll soon see why thousands of DJs worldwide choose Rane with Serato Scratch Live.

The auxiliary input provides a live input feed for creative sampling, recording your set or using a third vinyl turntable or CD deck. The auxiliary output delivers a third deck or the SP-6 sample player output right to your mixer. Studio grade phono preamps and 24-bit audio processing deliver exceptional sound.

The SL 3 includes two 12" Control Vinyl records and two Control CDs, USB cable, and audio cables to your mixer. An international

power supply with country adaptors is included to insure optimum performance and easy transfer when unplugging USB between DJs. A soft zippered carrying case for the SL 3 is also included.

The SL 3 interface box is 6.8" x 5" x 1.3" (17.3 x 12.6 x 3.3 cm). See the "Minimum System Requirements for Serato Scratch Live" on page 7.

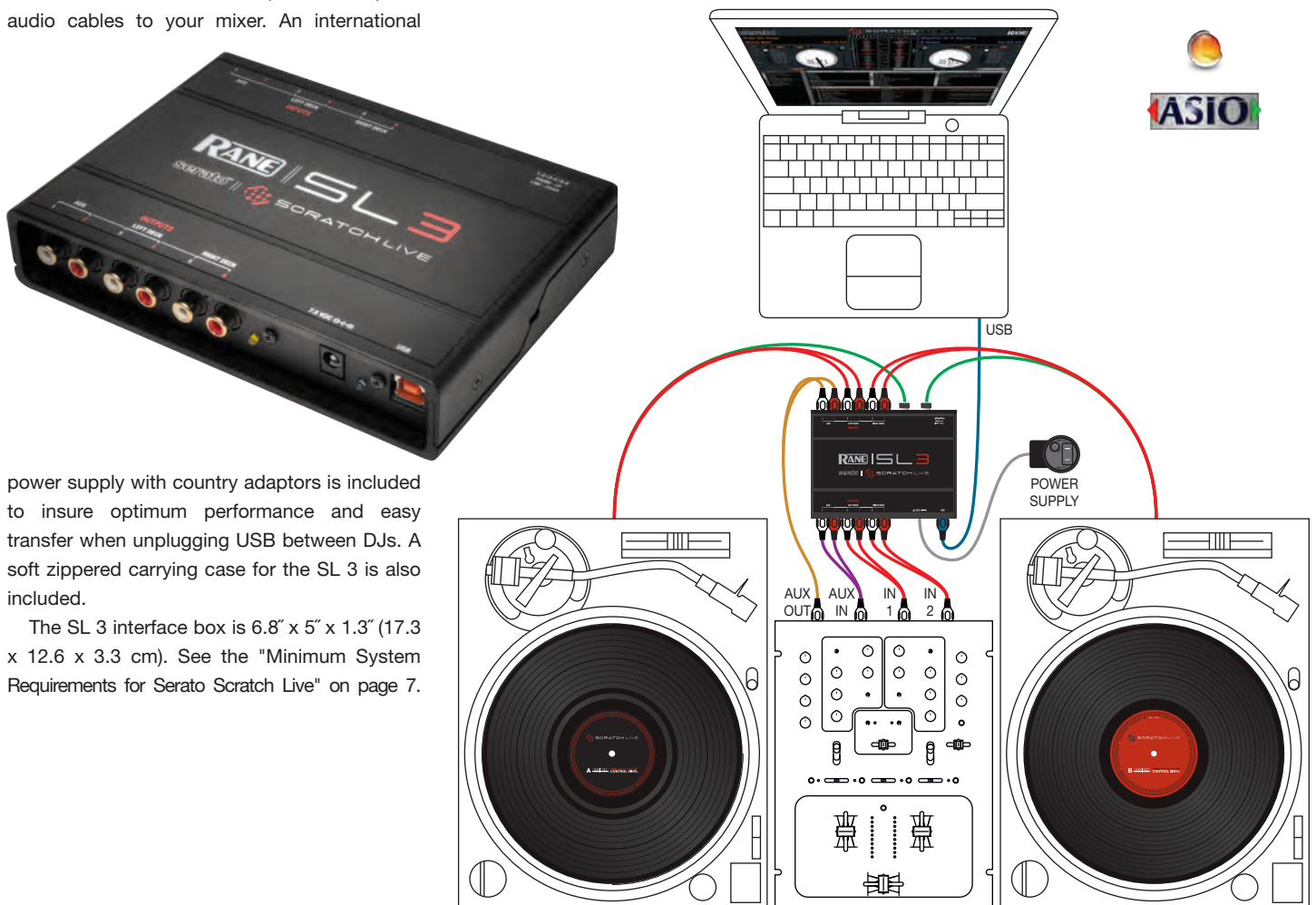
RANE || SL3

ADVANCED THREE-DECK INTERFACE FOR PROFESSIONAL DJs

serato ||  **SCRATCH LIVE**

SL 3 FEATURE AND PERFORMANCE ENHANCEMENTS

- Supports up to three turntables or CD decks switchable in any combination.
- Aux Input for Live Mix Recording, LiveFeed or a third deck.
- Aux Output can be assigned to the SP-6 Sample Player or a third deck.
- Stack mode allows all three decks on the screen at once.
- Independent Line / Phono-level selection for each input for greater flexibility.
- 6-in 6-out sound card with any software supporting ASIO or Core Audio.
- Software and driver-switchable Direct Thru connections for simplicity.
- External power supply included to provide Direct Thrus without a computer.
- Includes two control records, two CDs, cables and a soft zippered carry case.



Rane SL 4 for Serato Scratch Live

The SL 4 connects four vinyl turntables or CD players to your computer and the mixer of your choice. Using special control vinyl, CDs or MIDI controllers, you can scratch and mix files from your Mac or Windows computer's CD or hard drive. With unparalleled performance, stability and audio quality, you'll know why thousands of DJs worldwide choose Rane with Serato Scratch Live.

The SL 4 is the first standalone DJ interface with two USB ports for seamless DJ changeover and back-to-back performances. Get superior sound with high quality 96 kHz, 24-bit audio. Built-in galvanic isolation between USB and audio, with turn on/off muting, ensures that only the purest interference-free audio signal is heard. Low-latency ASIO and Core Audio drivers allow using the SL 4 as a studio production tool with multiple third-party software applications. The SL 4 is masterfully crafted by Rane for the discerning DJ.



The SL 4 includes four 12" Control Vinyl records and four Control CDs, two USB cables, and audio cables to your mixer. An international power supply with country adaptors is included to insure optimum performance. A soft zippered carrying case for the SL 4 is also included.

The SL 4 interface box is 7.25" x 5" x 1.7" (18.4 x 12.6 x 4.3 cm). See the "Minimum System Requirements for Serato Scratch Live" on page 7.

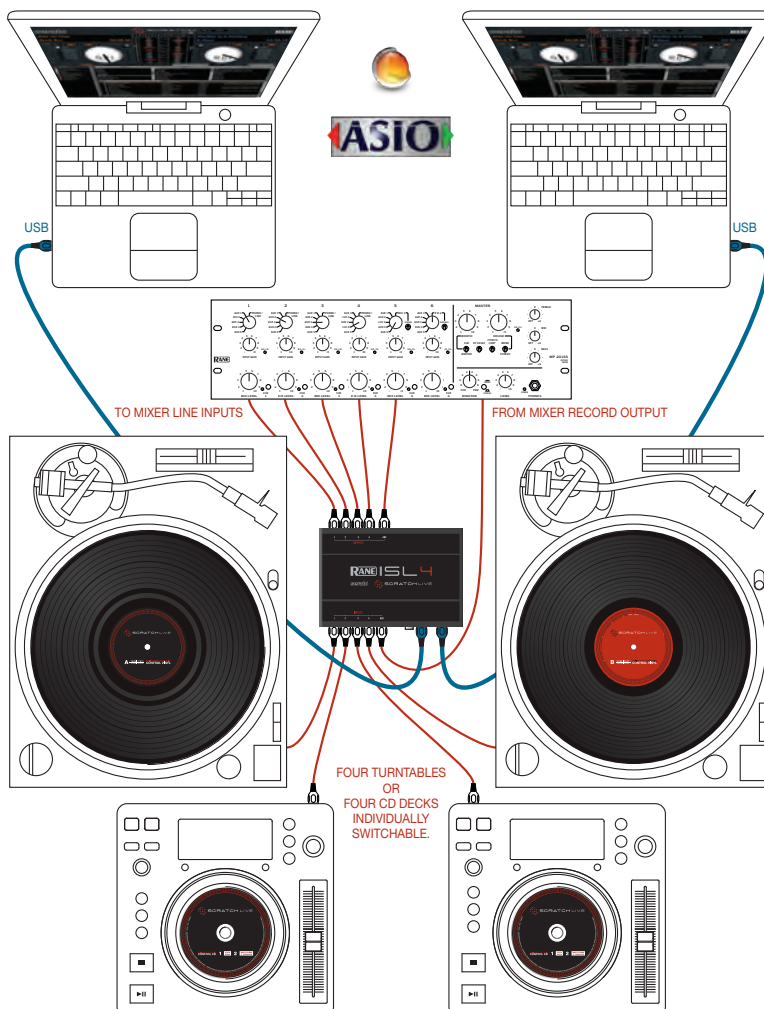
RANE || SL 4

TWO COMPUTERS AND FOUR DECKS USING YOUR FAVOURITE MIXER

serato ||  **SCRATCH LIVE**

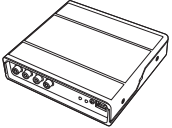
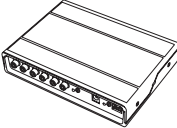
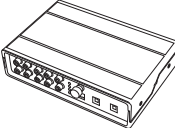
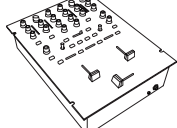
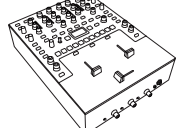
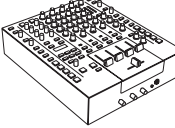
SL 4 FEATURE AND PERFORMANCE ENHANCEMENTS

- Supports four turntables or CD decks switchable in any combination.
- Two high-speed USB 2.0 ports for two DJs for uninterrupted performances.
- Aux Input for session recording or LiveFeed.
- Aux Output assignable to the SP-6 Sample Player.
- Four software-switchable analog Thru connections for regular vinyl/CD.
- 48 kHz and 96 kHz sample rate switch on the SL 4 rear.
- 10-in 10-out USB sound card with any software supporting ASIO or Core Audio.
- Bus power from either USB port or the included external power supply.
- Includes four control records, four CDs, two USB and six RCA cables.



Serato Scratch Live Hardware Comparison Guide

This detailed comparison of Rane's official hardware for Serato Scratch Live includes reference to differences within Scratch Live software.

SL 2	SL 3	SL 4	SIXTY-ONE	SIXTY-TWO	SIXTY-EIGHT
					

SOFTWARE FEATURES	SL 2	SL 3	SL 4	Sixty-One	Sixty-Two	Sixty-Eight	HARDWARE FEATURES	SL 2	SL 3	SL 4	Sixty-One	Sixty-Two	Sixty-Eight
2 Deck mixing	•	•	•	•	•	•	USB 1.1						
3 Deck mixing		•	•			•	USB 2.0	•	•	•	•	•	•
4 Deck mixing			•			•	Two USB ports			•		•	•
Visual Beat Matching	•	•	•	•	•	•	Mic input (1/4" or XLR)				•	•	•
Key lock	•	•	•	•	•	•	Phantom-powered Mic in						•
Censor button	•	•	•	•	•	•	Second Mic input						•
Repeat button	•	•	•	•	•	•	Mic input tone controls				•	•	•
5 available cue points	•	•	•	•	•	•	Mic Input FlexFX				•	•	•
9 available loop slots	•	•	•	•	•	•	3-band full cut EQ				•	•	•
DJ-FX	•	•	•	•	•	•	Magnetic mixer faders				•	•	•
SP-6 Sample Player	•	•	•	•	•	•	FlexFX loop				•	•	•
Additional SP-6 output		•	•	•	•		" USB insert for DJ-FX				•	•	•
Virtual Deck gain trims	•	•	•	•	•	•	" Built-in mixer effects					•	•
Master gain trim	•	•	•	•	•	•	USB bus powered	•	•	•			
Core Audio/ASIO drivers	•	•	•	•	•	•	Self-powered				•	•	•
MIDI mappable controls	•	•	•	•	•	•	USB in for SP-6 out				•	•	
MIDI beat clock send and receive					•		SP-6 trigger buttons					•	
							Cue trigger buttons					•	•
							Loop controls					•	•
							Library / Load controls					•	•
							Aux/Session Inputs		•	•	•	•	•
							Aux/Session Outputs		•	•	•	•	•
							Software Thru Outputs	•	•	•			
							16-bit converters						
							24-bit converters	•	•	•	•	•	•
							44.1 kHz USB audio	•	•				
							48 kHz USB audio	•	•	•	•	•	•
							96 kHz USB audio			•			
							Serato Video compatible	•	•	•	•	•	•
							Main outputs (XLR)					•	•
							Main outputs (1/4")				•		
							Booth outputs (1/4")					•	•
							Two headphone outputs (1/4" and 3.5 mm)				•	•	•
							Split cue headphone monitoring				•	•	•

SERATO CONTROL

Mix and scratch files from your computer hard drive using Serato Control Vinyl, Serato Control CD or Official Serato Accessories.

Serato Control Vinyl and Control CD (included with Rane hardware)

The Serato Control Vinyl and Control CDs each contain the Noise Map Control Tone, a unique control signal which allows Scratch Live to track the motion of the record, simulating the same movement with digital audio.

Official Serato Accessories (optional)

Serato has certified a select range of new generation controllers with USB connectivity. Scratch Live can send track information to supported hardware on-board displays. Use the platters, buttons and sliders instantly, as supported hardware has pre-mapped controls for a no-fuss setup.

These models are Serato Approved USB Controllers:

- Denon DJ DN-HC1000S
- Denon DJ DN-HC4500
- Novation Dicer
- Vestax VFX-1
- Pioneer CDJ-350
- Pioneer CDJ-850
- Pioneer CDJ-2000
- Pioneer CDJ-900
- Pioneer CDJ-400
- Pioneer MEP-7000

SERATO SCRATCH LIVE 2.4

Serato Scratch Live combined with Rane hardware is the ultimate solution for professional DJs, giving you the freedom to take your entire digital music collection on the road and equipping you with advanced features that add extra creativity to your DJing.

This intuitive system replicates the traditional DJing experience for “real feel” usability. With unparalleled performance, sound quality and stability, you’ll soon see why thousands of DJs worldwide choose Serato Scratch Live.

- Load music files onto Virtual Decks for playback.
- Browse your music collection by custom categories and album art.
- Prepare audio files for playback with auto-gain and BPM calculation.
- Organise music with crates, subcrates and smart crates.
- Choose from multiple play and display modes to suit your performance style.
- Use visual aides, cues and loops to perfect your mixing.
- Add extra creativity to your sets with DJ-FX, the SP-6 Sample Player and other Scratch Live plug-ins.

SUPPORTED FILE FORMATS

Scratch Live supports multiple file formats: fixed and variable bit-rate MP3, MP4, Ogg Vorbis, AAC, ALAC, AIFF, WAV and Whitelabel (wl.mp3) file types*. M3U playlists are also supported. ***For more information on wl.mp3 files visit whitelabel.net.**

NOTE: Older iTunes Music Store DRM files cannot be played back by Scratch Live. iTunes Plus files are DRM-free.



Classic Vertical Mode

VIRTUAL DECKS

Music files are loaded onto the Virtual Decks, which rotate as the music plays, much like regular turntables or CDJ decks.

The Virtual Deck shows everything about the speed and position of a track. As the vinyl rotates, so does the line on the label. The circular progress bar around the edge is a visual representation of the position within the song. The Virtual Decks display pitched BPM information, and the time and remaining time are displayed in minutes and seconds.

Serato Control Vinyl and Control CDs are included with Rane hardware. These each contain the Serato NoiseMap™ Control Tone, a unique control signal which allows Scratch Live to track the motion of the record, simulating the same movement with digital audio.

LIBRARY

Browse your music collection by album, artist, BPM and genre. Additional column sort options can be selected for custom needs. Tracks in your library can also be browsed using three different album art modes.

Scratch Live includes an intuitive Search function to help you find tracks quickly.



Stack Mode with the Rane SL 4 and Rane Sixty-Eight

IMPORTING MUSIC

Importing music is done simply by navigating to your hard drive(s) via Scratch Live's File pane. You can also drag and drop files directly from Explorer (Windows) or Finder (Mac). iTunes users have the option to integrate existing iTunes libraries and playlists into their Scratch live library.

Importing audio files to your computer is highly recommend, however you can play files directly from CD and CD-ROM.

FILE PREPARATION

Build waveform overviews, check for file corruption and use Scratch Live's optional auto-gain and BPM calculation with the Analyse Files button.

Use the Offline Player to prepare crates, audition tracks, and set cue and loop points, without needing to have the Rane hardware connected.

KEYLOCK

When Key Lock is on, the key or pitch of the song stays locked at what it would be if the track was playing at normal speed, regardless of the platter speed of the turntable or CD player.

CRATES AND SMART CRATES

Create Crates and Subcrates to group tracks within for quick recall and simple organisation. You can also merge these crates onto an external drive for simple migration to another laptop.

Smart Crates allow you to set rules and keywords for crates, which automatically update when relevant tracks are added or removed from your library.

HISTORY

The history button opens a complete log of all the tracks you have played and allows you to export Scratch Live session information as a data file for future reference.

Serato Playlists export track play information to your user profile on **serato.com**. This can be done using the History export function post-set, or you can choose to live update during your set.

PLAY MODES

Scratch Live has three different play modes which you assign to each Virtual Deck.



Absolute Mode most closely resembles the properties of regular vinyl; needle dropping, scratching, rubbing and other turntablist techniques are most faithfully reproduced in this mode. Absolute Mode is the recommended mode to use when using the standard hardware functions on CDJs.

Relative Mode allows for skip free scratching and the use of Scratch Live's cueing, looping and censor controls.

Internal Mode lets you play and mix files without external vinyl or CD control. Internal mode contains a start/stop function, a pitch slider and pitch nudge controls. It is also the emergency mode Scratch Live defaults to when the end of a control record or CD is reached.

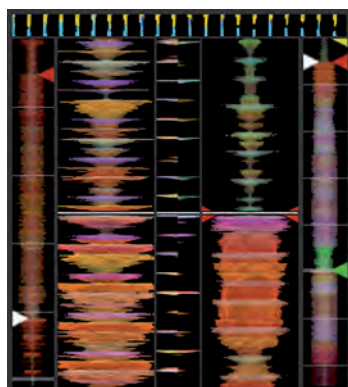
CUES AND LOOPS

Create up to five Cue Points with labels for each track to mark and trigger key parts of your songs.

Create and save up to nine Loops per track, either manually or using the Auto-Loop function.



VISUAL AIDS



When a track is playing several waveforms and visual aids are displayed.

Tempo Display provides a helpful tool for beat matching – each peak represents the beats within a track. As you change the pitch of a song, these peaks shift position. When track tempos are in-time, these peaks will be aligned.

Beat Matching Display emphasizes the position of beats within a track alongside the waveform display, for quick beat matching.

Track Overview Display shows an overview of the track waveform, which is useful for finding transitions in a track and for jumping quickly to any part of the song.

Coloured Waveforms are by frequency for visual identification of instruments and vocals.

SCRATCH LIVE PLUG-INS

Optional plug-ins can be switched on and off, allowing you to choose which extra features you would like to use when DJing.

SP-6 Sample Player allows triggering up to six additional audio sources (e.g. sound effects, drops). Store samples in multiple sample bank slots, and choose output options for each slot.



DJ-FX give you control of two FX units, each with three chained effects slots per unit. Customise and save preferred effect parameter settings for quick recall.

Serato Video is an optional software plug-in for Scratch Live which adds the ability to play and mix video files. Manage a variety of video clips from within the Scratch Live library and load them onto a virtual deck for control with either vinyl or CD. Mix clips with a variety of transitions, as well as apply exciting effects to each clip. The mixed output is sent to your laptop's second display output, connecting to external monitors or projectors. Serato Video is supported and available only from serato.com.

The Bridge allows you to combine elements of Ableton Live with Serato Scratch Live, to create unique performances and to perfect your mixtapes. The Bridge is free-of-charge for users of Ableton Live/Suite 8.2 or above. Visit serato.com/thebridge.

MINIMUM SYSTEM REQUIREMENTS FOR SERATO SCRATCH LIVE

PLEASE NOTE: These are the **minimum** requirements to run Scratch Live. For best performance and for use in professional situations we recommend you buy a higher spec computer. We also recommend Intel processors.

- Available 2.0 USB port.
- 1024 x 768 screen resolution.
- 5400 RPM hard drive. 7200 RPM for high-resolution audio playback.
- 2 GB RAM (a large library will like more RAM).

MAC

- Intel 1.83 GHz Core Duo or better.
- OSX 10.5.8 or higher.

WINDOWS

- Intel processor, 2.2 GHz Core Duo or better.
- Windows XP with Service Pack 3 or higher.
- Windows Vista with Service Pack 2 or higher.
- Windows 7, recommended over Vista.

NOTE: Before buying a new computer, read the FAQs at serato.com.

NOTE: If you are using Scratch Live's more system-intensive features like the DJ-FX plug-in, you may need a higher spec computer or an optimised system. Read the Computer Optimisation Guide at serato.com.

Rane Sixty-One Performance Mixer for Serato Scratch Live

Turntablism is alive and more creative than ever. Rane and Serato are proud to be supporting partners in that creativity with the introduction of the Rane Sixty-One and Sixty-Two Mixers for Serato Scratch Live. For more than a decade, artists have chosen innovative Rane instruments to advance their art and three generations of TTM series mixers have been the top pick for many of the world's best performers. These mixers more tightly integrate performers, music, software, and hardware. The artist adds the passion, imagination and skills.

- Bundled with Serato Scratch Live along with ASIO and Core Audio Drivers.
- Includes two Serato Control Vinyl Records and two Serato Control CDs.
- The USB 2.0 port supports six stereo record and four stereo playback channels.
- 32-bit floating point audio processing sampled at 48 kHz.
- PGM controls include:
 - Gain trim, 3-band full-cut EQ, Left/Right Pan, HP/LP Filter with adjustable resonance.
 - FlexFx assign, Headphone Cue assign, Q-peak meter.
 - Magnetic fader with contour and reverse controls.
- Mic/line switchable input on XLR/TRS jack with gain trim, two-band EQ, and FlexFx assign.
- External analog insert for analog effects processor
- USB Insert for software effects such as DJ-FX in Serato Scratch Live.
- USB Aux Input for SP-6 sample playback with Headphone Cue and FlexFx assign.
- Magnetic crossfader and channel faders with reverse and contour controls.
- All controls are MIDI-mappable.
- Unit Size: 13.3" x 10" x 4" (33.8 cm x 25.4 cm x 10.2 cm).



Rane Sixty-Two Performance Mixer for Serato Scratch Live

The Sixty-Two Mixer is Rane's very best performance mixer, with all the great features of the Sixty-One, plus these additional features:

- Control Library, Cues, Loops and Samples on two computers with more than 40 software controls.
- Each of the two USB ports supports six stereo record and four stereo playback channels.
- Internal Effects Engine with Filter, Flanger, Phaser, Echo, Robot and Reverb effects:
 - MIDI beat clock send and receive allows effects to sync.
 - BPM sync effects with Serato Scratch Live.
 - TAP engine with time encoder and beat multiplier control.
- USB Aux Input for SP-6 sample playback includes a dedicated High-pass / Low-pass Filter.
- Unit Size: 14.25" x 10.5" x 4" (36.2 cm x 26.7 cm x 10.2 cm).

Z-Trip's Limited Edition Sixty-Two Z Mixer

Functionally identical to Rane's Sixty-Two with added bonuses:

- Face plate design by Shepard Fairey.
- Purple and yellow accents.
- Includes custom purple cables.



Rane Sixty-Eight Club Mixer for Serato Scratch Live

Using two USB ports, the Sixty-Eight mixer lets two DJs use their laptops at the same time, allowing seamless handover from one DJ to another. You can also control up to four decks with a single laptop.

Armed with studio-grade phono preamps, USB and S/PDIF inputs, the Sixty-Eight can allow a blend of analog and digital audio sources like never before. It features easy internal digital effects with on-beat effect switching, external analog insert support for legacy hardware effects, and USB insert support for computer-based effects.

• Input Channels:

- Four stereo deck inputs, each switchable to Phono, Line or S/PDIF.
- Four stereo Auxiliary Line inputs.
- Four stereo USB playback options.

- Bundled with Serato Scratch Live along with ASIO & Core Audio Drivers.
- Two independent USB 2.0 high speed ports:
 - Each supports 22 floating-point 32-bit audio channels at 48 kHz.
- Direct control of over 30 Library, Cue and Loop functions.
- Support for two, three or four Virtual Decks in Scratch Live.
- Flexible USB recording options, record from any input or output.
- 3-band, full cut EQ with sweepable High-pass / Low pass Filter.
- Unique FlexFX bus with six internal effects, plus USB and analog insert support for computer-based effects.
- Two independent mic inputs: one with phantom power and one with line-level input switches.
- Unit size: 14.3"H x 12"W x 4"D (36.4 x 30.5 x 10.2 cm).



Rotary Mixer



MP 2016S Rotary Mixer

- 6 stereo input buses with 4 phono preamps, 2 mic/line preamps and 5 aux line inputs.
- Each bus includes initial input gain controls and individual cue switches. A high-powered headphone amplifier features split master/cueing.
- The Booth output is switchable master or cue. The Mic Engage switches can duck the Booth outputs 12 dB (internally defeatable).
- The Master (House) output features Accelerated Slope™ 3-band full-cut tone controls with a range of +6 dB to off.
- Switchable stereo effects loop; Pre- & post-effects tape outputs; RCA inputs, XLR mic/line inputs, 1/4" effects loop, XLR and RCA outputs.



Optional XP 2016S Processor

- Adds Active Crossfader™ with full-range Contour control and Individual Crossfader assign switches.
- Adds Accelerated Slope™ 3-band tone controls to each input bus.
- Master/Cue meters follow the headphone split cue selection.
- A single ribbon cable connects the XP 2016S to the MP 2016S (included).
- Internal universal power supplies work anywhere in the world (100-240 VAC).
- Size (each unit): 5.25" H x 19"W x 5.3"D (13.3 cm x 48.3 cm x 13.5 cm).



TTM 56S Performance Mixer

Rane takes performance mixer design as seriously as DJs take their art form. The TTM 56S is flexible, durable, and feature packed. The audio quality qualifies it for use in the most demanding live venue, recording studio or live broadcast applications.

- Mic input with EQ and mic effects loop.
- Faders and Crossfader have Contour and Reverse controls.
- Stereo Aux Input for session mix, iPod® or keyboard.
- Stereo Aux Output for session mix, booth or recording.
- Post-fader FlexFX™ allows external reverb and echo decay effects to respond to fader action without cutting off tails.
- All four inputs are Phono/Line switchable, letting you connect 4 turntables or 4 CD players or any combination.
- Both 1/4" and 3.5 mm headphone jacks on the front.
- Unit size: 13.3"H x 10"W x 3"D (33.8 x 25.4 x 7.7 cm).

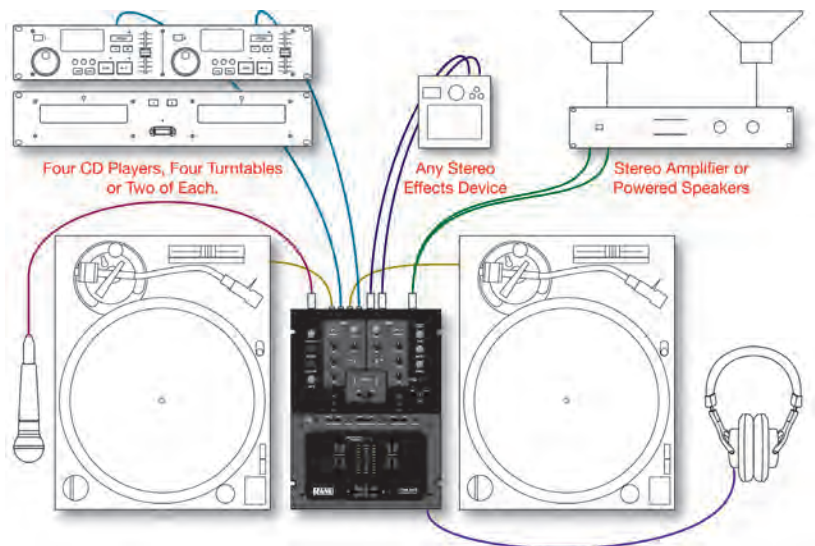
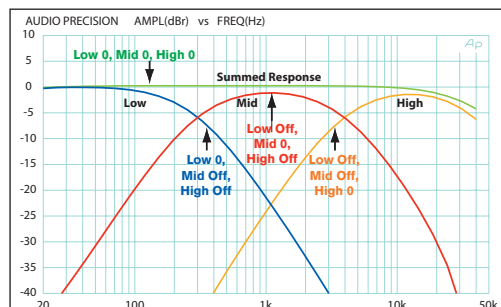


NON-CONTACT CROSSFADER AND CHANNEL FADERS

Rane's patented magnetic fader is the fastest, most accurate, and longest lasting on the planet. The design uses non-contact magnetic position sensor technology previously reserved for aerospace and industrial applications. Unlike optical non-contact faders, the magnetic fader is impervious to smoke, moisture, temperature and aging. The electrical performance is totally unaffected by use. No noise, no bleed – ever!

3-BAND ACCELERATED-SLOPE™ FULL-CUT TONE CONTROLS

High, Mid & Low tone controls react from +6 dB to off: full bass and treble cut on each channel. Engage switches allow A/B comparison and the ability to quickly cut or add tone effects.





Empath Black

- Black Lexan finish.

Empath mixers combine the vision of Grandmaster Flash and Rane technology. The name implies understanding, awareness and sensitivity to the needs of DJs. The top plate is durable Lexan™ available in four different colours, and all have these features:

- 3 phono/line switchable inputs plus a mic input and a stereo Aux input.
- 3 mixing buses, each with 3-band Accelerated Slope™ full-cut EQ (+6 dB off).
- Switchable Auto-Gain prevents programme level jumps when changing sources.
- Post-fader FlexFX™ lets external reverb and echo decay tails respond to fader action.
- Contour controls for Fader 1, Fader 3 and the Crossfader.
- Headphone outputs include tone controls with both 1/4" & 3.5 mm jacks.
- Universal internal power supply works anywhere in the world (100-240 VAC).
- Unit size: 13.3"H x 10"W x 3"D (33.8 cm x 25.4 cm x 7.7 cm).



Empath Blue

- Original blue and silver Lexan finish.



Empath Rotary

- Black Lexan finish.
- Rotary channel faders.



Empath Signature

- Black and gold Lexan finish.
- Signature by Grandmaster Flash.
- Includes deluxe road case.



MP25 Club Mixer

Stream 4 live tracks from your favourite DJ software, while mixing these with vinyl and CD through your VST effects, and record the programme buses and mics or the main mix with another application.

INPUTS

- Four individually switchable stereo Phono/Line inputs.
- Four stereo Auxiliary inputs.
- Four stereo USB playback inputs.
- Two microphone inputs with optional Talkover ducking:
 - One with front and rear panel connectors.
 - One with a line-level input option.

OUTPUTS

- Stereo Main Outputs on balanced XLR and unbalanced RCA:
 - Rear panel Mono/Stereo switch.
 - Rear panel Max Out level attenuator.
- Stereo balanced ¼" TRS Zone and Booth outputs:
 - Auto-mono output on both Left and Right jacks.
- Stereo Record outputs on RCA, S/PDIF and USB.



Plays well with others:

Ableton, GarageBand, PCDJ, Traktor, Virtual DJ, etc.

- Low-latency ASIO / Core Audio drivers eliminate delay between the control input to audio software and the audible result.
- Multiclient ASIO / Core Audio drivers allow multiple software applications to simultaneously stream audio to and from the mixer.
- Four stereo playback channels stream audio directly from your favourite playback, mixing, beat-making, and looping applications to the MP25's digital mixer engine.
- Four stereo record channels stream the four post-fader programme channels to your audio application for multitrack recording. A fifth stereo record channel streams Mic 1, Mic 2, or the Main Mix.
- The USB Effects Loop enables insertion of computer-based effects processors into the MP25's powerful FlexFX bus.
- The MP25 front panel is MIDI-mappable, allowing control of audio application parameters using the mixer's control surface.
- Links to third-party software applications at rane.com/mp25.html.



The MP25 fits in a 4U rack or coffin, able to replace a classic Rane MP 24, MP 22 or MM 8z series Mixer. [7" H x 19" W x 4.6" D] (17.8 cm x 48.3 cm x 11.7 cm)



MP26 Club Mixer

- Same inputs, outputs, and routing as the MP25, with the addition of six internal digital effects.
- Filter, Flanger, Phaser, Echo, Robot and Reverb.
- MIDI Beat Clock send and receive allows effects to sync.

MP25 AND MP26 SYSTEM REQUIREMENTS

ASIO and Core Audio software applications use these mixers act as a low-latency, USB 2.0, 10-input, 12-output sound card, with MIDI controller capability in depending on third-party programmes.

The MP26 ASIO and Core Audio drivers require the following minimum system:

- PC: XP, Vista, Windows 7.
- Mac: OSX 10.5 or higher.
- System Memory: 2 GB or more.
- Processor: 2 GHz single core or better.

Visit the MP25 and MP26 pages at rane.com for the most recent drivers and links to third-party software.



The MP26 fits in a 5U rack or coffin, able to replace a Rane MP 44. The size is 8.75" H x 19" W x 4.6" D] (22 cm x 48.3 cm x 11.7 cm)



MP 2S Compact DJ Mixer

The MP 2S is the answer anywhere rack space is a premium or mobility is a must: Mobile DJ, club, remote broadcasting, remix or post production.

- 2 Phono/Line and 2 Line (total of 4) inputs to 2 crossfader buses, each with its own ± 12 dB Low and High tone controls.
- Each Programme bus selects any of the four stereo Inputs, so any Input can appear on either side of the Crossfader.
- Long-lasting 60 mm VCA Active Crossfader™; Balanced 1/4" TRS Mic Input with front panel volume control.
- RCA Tape outputs are switchable Pre- or Post-Mic; House and Aux are balanced 1/4" TRS outputs.
- Easy A/B/PGM cueing with powerful headphone amplifier; Unit size: 1.75"H x 19"W x 5.3"D (4.4 cm x 48.3 cm x 13.5 cm)

Mixer Accessories

Mixer Road Cases

Order the model CASE3 to fit any Empath model, TTM 56S or the TTM 57SL mixer. Order the CASE4 model to fit the Sixty-Eight mixer. High impact NK-7 resin absorbs transport shocks. The case is watertight with an automatic pressure release valve to equalise inside pressure. There's space beneath the mixer for cables, cartridges and other small items.

- Outside measurements: 7.5" x 16" x 19.75" (19 x 41 x 50 cm).
- Shipping weight is 17 pounds (7.72 kg); Case is 10 pounds (4.53 kg).



MFC 1 Mixer Foam Cover

This dense foam cover is an inexpensive protection for all the knobs and sliders on your precious TTM 56S, TTM 57SL or Empath mixer. The cover quickly and easily hugs your mixer with two velcro straps. Put your mixer in a suitcase or backpack without fear of damaging any controls.

- Cover measurement: 1" x 10.5" x 13.5" (2.6 x 26.7 x 34.3 cm).
- Cover weight is only 5.2 ounces (148 grams).
- Shipping weight is 1 pound (400 grams).



Rane 2+ Year Limited Warranty

Rane's standard warranty covers parts and labour for 2 years from the date of purchase. Completion of the Rane Warranty Form (mail or online) entitles the owner to a 1 year extended warranty (for a total of 3 years [valid in U.S.A. only]).

rane.com

For the most up-to-date information on all Rane hardware, manuals, accessories, RaneNotes, support forum and the Rane Pro Audio Reference.

serato.com

For the most up-to-date information on Serato Scratch Live software, downloads, support forum, how-to videos and Whitelabel.net.

© 2012 Rane Corporation. Lexan is a registered trademark of General Electric. Decora is a trademark of Leviton. Penny+Giles is a trademark of Curtiss-Wright Corp. Windows XP, Vista and 7 is either a registered trademark or a trademark of Microsoft Corporation in the United States and/or other countries. Apple, Mac, Macintosh and iTunes are trademarks of Apple Computer, Inc., registered in the US and/or other countries. Scratch Live and the Scratch Live logo are trademarks of Serato Audio Research. Scratch Live is licensed exclusively to Rane Corporation. Accelerated-Slope, FlexFX, and Active Crossfader are trademarks of Rane Corporation. Cover art by Kid Koala for Rane Corporation. All rights reserved.

